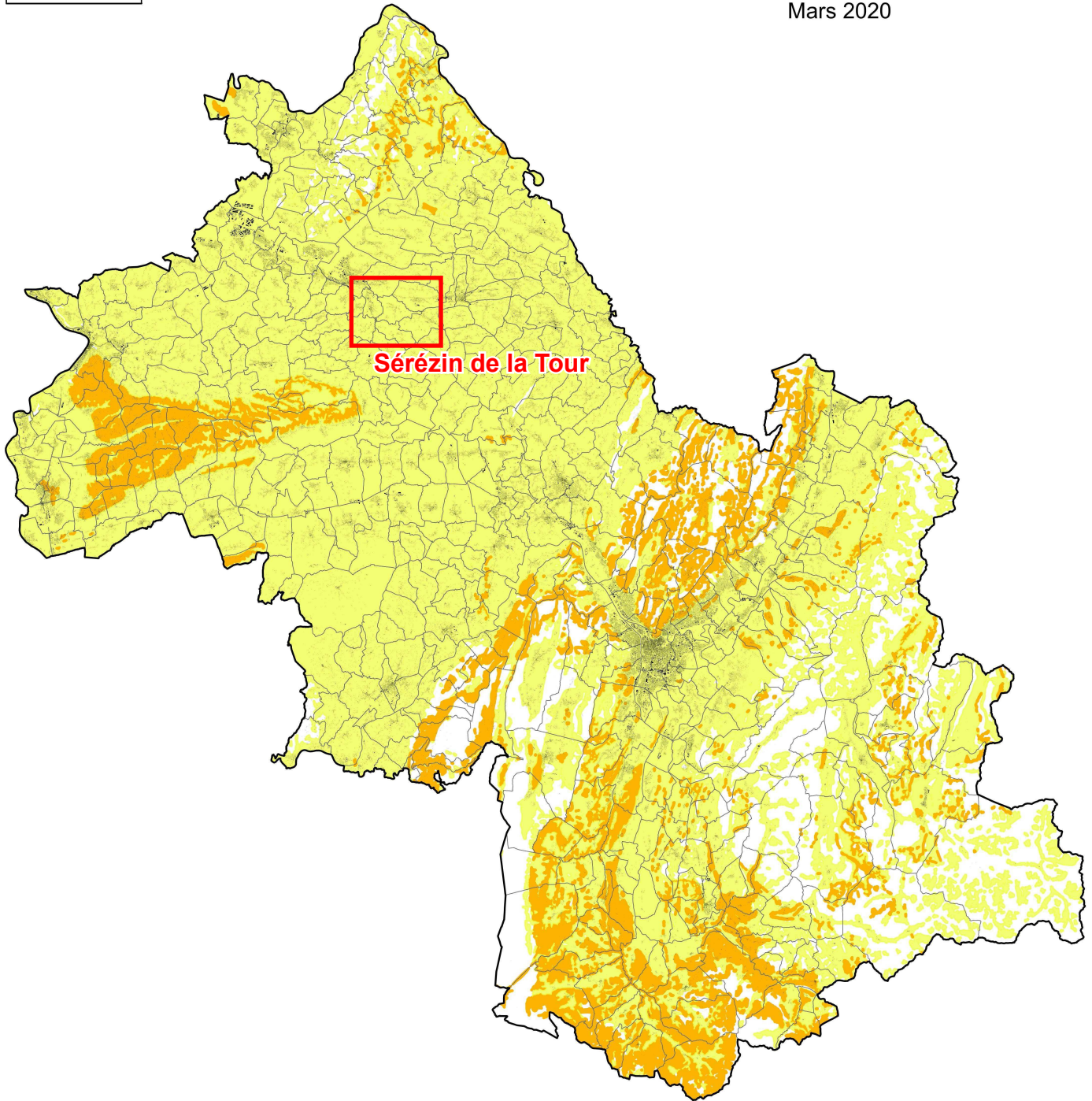



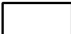




Exposition au retrait gonflement des sols argileux

Mars 2020



Zones d'aléas retrait-gonflement Zones urbanisées

- | | | | |
|---|---|---|-----------------------|
|  | Aléa Faible |  | Bâti |
|  | Aléa Moyen |  | Limite départementale |
|  | Zone à priori non argileuse non sujette au phénomène de retrait-gonflement sauf en cas de lentille ou de placage argileux local non repéré sur les cartes géologiques actuelles |  | Limites communales |

0 10 20 km

